

20th February 2023 - Agenda Supplement



Democratic Services
The Corby Cube,
George Street,
Corby,
Northants,
NN17 1QG

Meeting: Strategic Planning Committee
Date: Monday 20th February, 2023
Time: 7.00 pm
Venue: Council Chamber, Corby Cube, George Street, Corby, NN17 1QG

Agenda Supplement

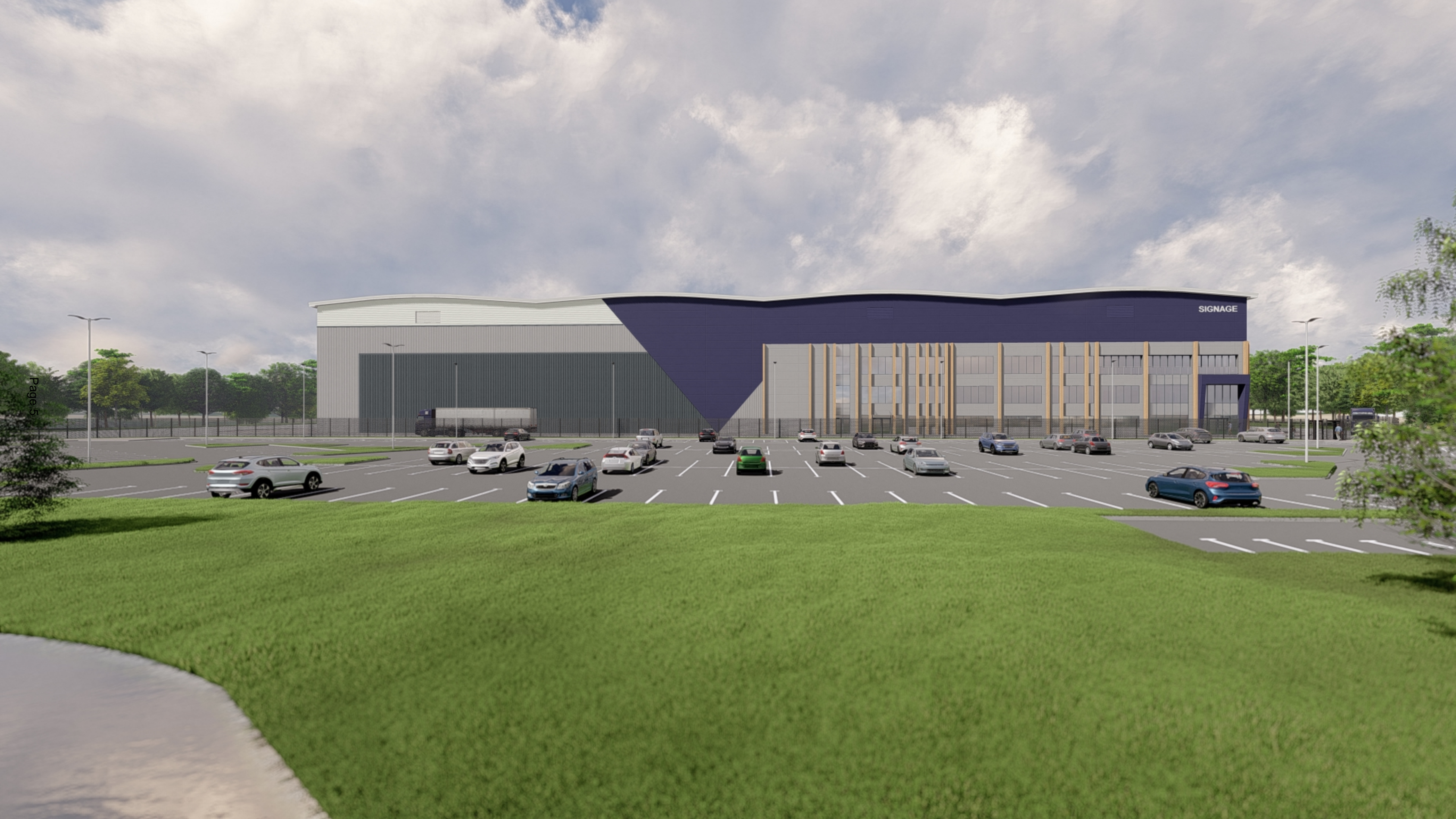
The following appendix has now been published which was not available at the time the agenda was published.

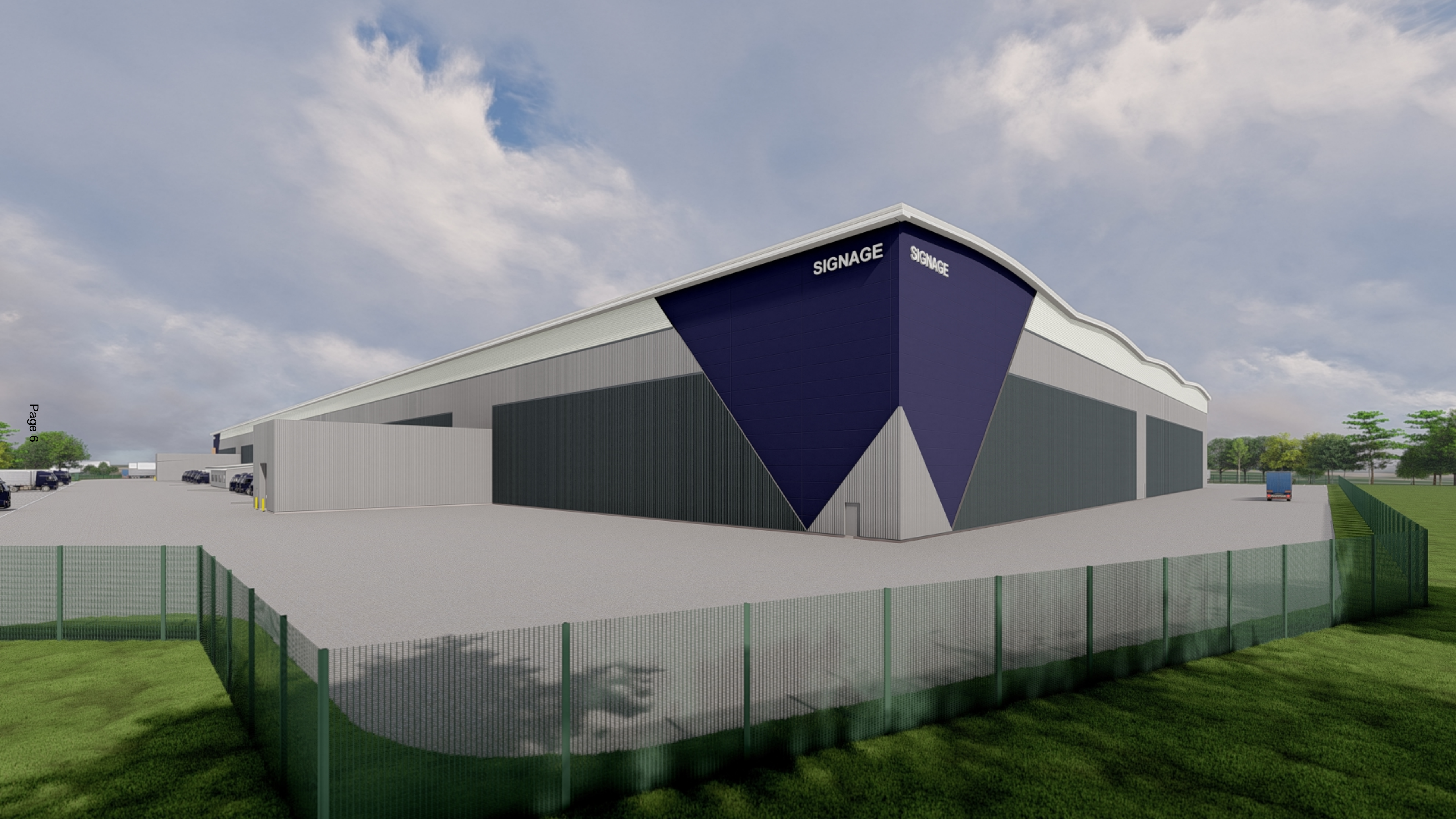
Item	Subject	Page no.
4.1	NC/22/00294/DPA	3 - 10

This page is intentionally left blank











View A: Baseline view



View A: View of proposed development at year 1.



View A: View of proposed development at year 15.



Location of viewpoints



Page 7

Client: Mulberry Commercial Developments (Midlands) Limited DC420 DIRFT, Crick Road, Rugby, Warwickshire, CV23 8YL	Figure Reference: BG21.387.15 BG21.387.15-BRGR-ZZ-ZZ-DR-L-00001	Designed: HCK	Drawn: HCK
	Figure Name: Photomontage A	Checked: LB	Approved: LB
Project Reference / Name: BG21.387 - Rockingham, Corby	View looking west from Kestrel Road towards the proposed development.	Date: 09.01.2023	Revision / Issue purpose: Revision P03 - Issued for Planning



Brindle & Green Limited
LANDSCAPE CONSULTANTS
www.brindlegreen.co.uk
TEL: 0800 222 9105



View B: Baseline view



View B: View of proposed development at year 1



View B: View of proposed development at year 15.



Location of viewpoints



Position of proposed development

Client: Mulberry Commercial Developments (Midlands) Limited DC420 DIRFT, Crick Road, Rugby, Warwickshire, CV23 8YL	Figure Reference: BG21.387.15 BG21.387.15-BRGR-ZZ-ZZ-DR-L-00002	Designed: HCK	Drawn: HCK
	Figure Name: Photomontage B	Checked: LB	Approved: LB
Project Reference / Name: BG21.387 - Rockingham, Corby	View looking north-west towards the proposed development from Hobby Drive.	Date: 09.01.2023	Revision / Issue purpose: Revision P03 - Issued for Planning



Brindle & Green Limited
LANDSCAPE CONSULTANTS
www.brindlegreen.co.uk
TEL: 0800 222 9105



View C: Baseline view



View C: View of proposed development at year 1.



View C: View of proposed development at year 15.



Location of viewpoints



Client: Mulberry Commercial Developments (Midlands) Limited DC420 DIRFT, Crick Road, Rugby, Warwickshire, CV23 8YL	Figure Reference: BG21.387.15 BG21.387.15-BRGR-ZZ-ZZ-DR-L-00003	Designed: HCK	Drawn: HCK
	Figure Name: Photomontage C	Checked: LB	Approved: LB
Project Reference / Name: BG21.387 - Rockingham, Corby	View looking north-east towards the site from Gretton Road	Date: 09.01.2023	Revision / Issue purpose: Revision P03 - Issued for Planning



Brindle & Green Limited
LANDSCAPE CONSULTANTS
www.brindlegreen.co.uk
TEL: 0800 222 9105

This page is intentionally left blank